

# 16<sup>TH</sup> ANNUAL NORTHWEST'S BULL SALE

**MONDAY MARCH 19, 2018**

**1:00 pm KRAMER'S BIG BID BARN  
NORTH BATTLEFORD**

**FEATURING 6 BREEDS OF BULLS**



**POLLED HEREFORD**



**BLACK ANGUS**



**CHAROLAIS**



**LIMOUSIN**



**RED ANGUS**



**SIMMENTAL**

**VIDEO  
SALE!**

View the bulls on location prior to the sale and the day before at the open house as they will not be going through the sale ring as this is a video sale. Videos and catalogue can be seen online at

[www.buyagro.com](http://www.buyagro.com)

**With a buyer's number, you are eligible to win one of two \$500.00 credit vouchers towards your purchase of a 2018 bull. Winners will be announced prior to the sale.**



Live Games Tables  
Kihiw Restaurant  
Free Shuttle Service

**335 Slot Machines!**

Entertainment  
Banquet Room  
Players Club



**Gold Eagle Casino** (306) 446-3833  
**Kihiw Restaurant** (306) 446-0507  
**Event Centre** (306) 446-2488  
11902 Railway Ave  
North Battleford, SK  
[www.GoldEagleCasino.ca](http://www.GoldEagleCasino.ca)

YouTube



# VIDEO SALE!

View the bulls on location prior to the sale and the day before at the open house as they will not be going through the sale ring as this is a video sale. Videos and catalogue can be seen online at

[www.buyagro.com](http://www.buyagro.com)

Stock available for viewing Sunday 1:00 pm-5:00 pm and Monday 9:00 am-Sale Time

## AUCTIONEER

Neil Kramer  
Phone 306-445-5000

## RINGMEN

Kim Kramer  
Brendan Kramer  
Scott Meiklejohn  
Michael Higgs

## SALE REPRESENTATIVE

Mike Franc  
Phone 306-930-8684  
Jack Hochbaum  
Phone 306-843-2054

## BLOCKMAN

Terry Cunningham  
Phone 306-276-2416

SALE CONDUCTED BY

**KRAMER**  
AUCTIONS

A Ritchie Bros.™ solution

Phone 445-5000

P.O. Box 1807 North Battleford, SK  
[kramerauction.com](http://kramerauction.com)

## SALE SCHEDULE SALE STARTS AT 1:00 PM

- Red Angus • Polled Hereford
- Simmental • Charolais
- Limousin • Black Angus

ALL BULLS  
ARE  
SEMEN  
TESTED

Complimentary Coffee & Donuts  
Supplied by



North Battleford Branch

1:00 pm - 5:00 pm  
Sunday Afternoon



Complimentary Beef-On-A-Bun  
Compliments of



1 Mile East Hwy #14 Box 1090, Unity, SK S0K 4L0  
[www.northwestterminal.com](http://www.northwestterminal.com)

11:00 am - 1:00 pm Sale Day

Complimentary Beef-On-A-Bun  
Compliments of

CUT KNIFE



11:00 am - 1:00 pm Sale Day

## CONSIGNORS

### RED ANGUS

#### HIGH TREE CATTLE

Jack & Terry Hochbaum

Box 242, Wilkie, SK S0K 4W0

Phone 306-843-2054 Fax 306-843-2059

#### MANN BROS. RED ANGUS

Joel & Jennifer Mann

Box 327, Wilkie, SK S0K 4W0

Phone 306-843-2063

### POLLED HEREFOLDS

#### R&L HEATHER POLLED HEREFOLDS

Ryan & Bob Heather

Box 312, Biggar, SK S0K 0M0

Phone 306-948-2714

### SIMMENTALS

#### BAR A SIMMENTALS

Mike Millar, Donna Asher & Wyatt Millar

Box 178, Grandora, SK S0K 1V0

Phone 306-668-4375 Cell 306-220-2265

#### BAR DIAMOND CATTLE

Doug Green

Box 83, Daysland AB TOB 1A0

Phone 403-741-8982

#### DOUBLE R SIMMENTALS

Ryan Heather

Box 990, Biggar, SK S0K 0M0

Phone 306-951-7170

### CHAROLAIS

#### SWISTUN CHAROLAIS

Donnie Swistun

RR 1, North Battleford, SK S9A 2X3

Phone 306-445-9868 Cell 306-481-6680

### LIMOUSIN

#### LAZY A LIMOUSIN

Brent & Carey Hirschfeld

Box 279, Cando, SK S0K 0V0

Phone 306-937-7553

### BLACK ANGUS

#### HIGH TREE CATTLE

Jack & Terry Hochbaum

Box 242, Wilkie, SK S0K 4W0

Phone 306-843-2054 Fax 306-843-2059

#### TRIPLE T FARM

Trevor & Amanda Buchko

Box 1614, Battleford, SK S0M 0E0

Phone 306-937-2724

**WITH A BUYER'S NUMBER,  
YOU ARE ELIGIBLE TO WIN  
ONE OF TWO \$500.00 CREDIT  
VOUCHERS TOWARDS YOUR  
PURCHASE OF A 2018 BULL.  
WINNERS WILL BE ANNOUNCED  
PRIOR TO THE SALE.**

**Each animal becomes the risk of the  
purchaser as soon as they are sold.  
All bulls going back to the farms of the  
consignors until delivery  
MUST BE INSURED.**

**Insurance available on sale day:  
GLASLYN AGENCIES 306-342-2133.  
Arrangements for delivery of bulls  
MUST BE MADE PRIOR TO SALE TIME.**

**BRING YOUR TRAILER  
AND SAVE \$100 PER LOT**



**Glaslyn Agencies**  
**342-2133**

RANDY ORANGE

*Insuring all your tomorrows  
by protecting you today*

[www.glaslynagencies.ca](http://www.glaslynagencies.ca)

Medstead  
342-2157

Fax - 342-4311

Rabbit Lake  
824-2166



# RED ANGUS

## 1 RED HI-TREE NEXUS 109D

1917391 JRH 109D February 15, 2016

RED LJC MISSION STATEMENT P27  
**RED SILVEIRAS MISSION NEXUS**  
RED SILVEIRAS DAORV 8399

RED LJC LANCER 806  
RED LJC HANNAH 106  
RED TROTTERS ROMEO 412  
RED MOORE'S DAORV 5365

RED LCHMN GRND CANYON 1244G  
**RED HI-TREE LANA 39S**  
RED HI-TREE LANA 19L

RED BUF CRK CHF 824-1658  
RED KRN REBA'S ROBIN  
RED HI-TREE HIGH HEAVEN  
RED HI-TREE LANA

**BW 85 lbs Adj 205 Day WT: 524 lbs**

**Purebred.**

JRH 109D - A moderate framed Mission Nexus son with huge EPDs including a very low birth weight EPD and out of a Lana cow family.

**BW: -1.4 WW: 59 YW: 103 Milk: 20 TM: 49 CE: 0.3 MCE: 0.2**



Consigned by: **High Tree Cattle**

## 2 RED HI-TREE DOWN LOAD 201D

1917417 JRH 201D March 7, 2016

RED GLACIER EBV'S FIRE 228  
**RED HI-TREE BACKFIRE 228B**  
RED HI-TREE CHETA 148Z

RED LEACHMAN EBV 3531  
GLACIER FIREFLY  
RED TER-RON FULLY LOADED 540R  
RED HI-TREE CHETA 68U

RED HI-TREE SHOTGUN 68S  
**RED HI-TREE LANA 151X**  
RED HI-TREE LANA 81U

RED GLACIER LOGAN  
RED HI-TREE CHETA 8P  
RED LCC MAJOR LEAGUE A502M  
RED HI-TREE LANA 11P

**BW 81 lbs Adj 205 Day WT: 614 lbs**

**Purebred.**

JRH 201D - A two year old that has it all from the ground up, balance and eye appeal out of a bigger framed Lana cow.

**BW: -3.1 WW: 43 YW: 59 Milk: 16 TM: 37 CE: 5.7 MCE: 7.2**



Consigned by: **High Tree Cattle**

## 3 RED HI-TREE DETOUR 292E

1973616 JRH 292E February 8, 2017

RED RMJ REDMAN 1T  
**RED LAZY MC CC DETOUR 2W**  
RED LAZY MC BESS 12S

RED 5L NORSEMAN KING 2291  
CROWFOOT KURUBA 4033P  
RED LAZY MC SMASH 41N  
RED LAZY MC BESS 73N

RED CROWFOOT MOONSHINE 8081U  
**RED HI-TREE HELEN 138C**  
RED HI-TREE HELEN 58T

CROWFOOT 6004S  
RED CROWFOOT BRNDINA 6359S  
RED LITTLE DE DYNAMICS 508M  
RED HIGH-TREE HELEN 26N

**BW 82 lbs Adj 205 Day WT: 700 lbs**

**Purebred.**

JRH 292E - This hairy, big bodied, heavily muscled and complete son of Detour, has the added advantage of having a dark red, Moonshine 8081U daughter for his momma to complete the package.

**BW: -1.5 WW: 55 YW: 83 Milk: 17 TM: 45 CE: 6.4 MCE: 4.1**



Consigned by: **High Tree Cattle**

# Siklenka Seeds

P.O. Box 225, Glaslyn, SK S0M 0Y0  
(306) 342-4290 (306) 342-4409

Quality Grass  
and Forage Seed  
at affordable prices  
Custom Blending

Seed purities always available

# RED ANGUS

4

## RED HI-TREE GRAND SLAM 265E

1973627 JRH 265E February 13, 2017

RED VGW GAME PLAN 816  
**RED SIX MILE GRAND SLAM 130Z**  
 RED SIX MILE REBECCA 216X

RED VGW GAME PLAN 508  
 RED VGW TW DOLL 0270  
 RED SSS BUCC 30U  
 RED WILBAR REBECCA 234M

RED NORTHLINE FAT TONY 605U  
**RED HI-TREE JEANNIE 156B**  
 RED HI-TREE JEANNIE 46W

RED SVR GANGSTER 14S  
 RED NORTHLINE RUBY 0305N  
 RED HI-TREE SHOTGUN 68S  
 RED HI-TREE JEANIE 7M

**BW 84 lbs Adj 205 Day WT: 690 lbs**

**Purebred.**

JRH 265E - A Grand Slam son with a little more hair and frame, out of a Fat Tony daughter with a very good milk EPD.

**BW: 0.1 WW: 55 YW: 79 Milk: 24 TM: 52 CE: 0.5 MCE: 4.2**



Consigned by: **High Tree Cattle**

5

## RED HI-TREE FUSION 194E

1973635 JRH 194E February 20, 2017

RED ANDRAS IN FOCUS B175  
**RED ANDRAS FUSION R236**  
 RED ANDRAS BELLE B167

MYTTY IN FOCUS  
 RED DI ESTONIA 316  
 RED ANDRAS THUNDER B105  
 RED ANDRAS BELLE 416

RED ROY ROGERS 5604  
**RED HI-TREE LANA 94X**  
 RED HI-TREE GRAND LANA 11R

RED NORTHLINE ROB ROY 122K  
 RED PIE PATTI ANNE 9221  
 RED LCHMN GRND CANYON 1244G  
 RED LITTLE DE LANA 937F

**BW 81 lbs Adj 205 Day WT: 625 lbs**

**Purebred.**

JRH 194E - Lots of volume and fleshing ability in this moderate, thick made Fusion son. His pedigree is just as deep with Grand Canyon, Northline Rob Roy and the little outcross with Mitty in Focus.

**BW: -2.7 WW: 41 YW: 73 Milk: 22 TM: 43 CE: 10 MCE: 5**



Consigned by: **High Tree Cattle**

**THE WRIGHT CHOICE**  
 Grain Cleaning and Feed  
 Rabbit Lake, SK

[taxam35@yahoo.com](mailto:taxam35@yahoo.com)

**Rolled Mixed Feed Starting at 13%-19%  
 Protein (Bulk or Bags)**

**Grain Cleaning • Deer & Bear Bait  
 Chicken Feed & Sheep Feed  
 Custom Rolling**

For more information call:  
 306.386.7004 or 306.824.2133



**BATTLEFORDS**

Bait and Tackle

**Allen Mitchell**

RR #1, Battleford, SK S0M 0E0

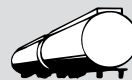
Phone: 306-937-2275

Fax: 306-937-7577

"YOUR ARCHERY SPECIALISTS"

**Jaeger Transport**  
 (1988) Ltd.

GRAIN • FERTILIZER • PETROLEUM  
 ALBERTA • SASKATCHEWAN • MANITOBA



400 - 20th Street  
 P.O. Box 1294  
 BATTLEFORD, SK S0M 0E0

(306) 937-2661

# RED ANGUS

## 6 RED MANN BROS CUT ABOVE 75E

1978053 MABR 75E January 16, 2017

RED LAZY MC COWBOY CUT 26U  
**RED LAZY MC CC CUT ABOVE 102Y**  
RED LAZY MC BESS 12S

RED BADLANDS MR BEEF 805  
**RED MANN BROS NANCY 75X**  
RED MANN BROS NANCY 75N

**BW 84 lbs**

**BW: -0.2 WW: 65 YW: 109 Milk: 15 TM: 48 CE: 5.6 MCE: 6.4**

RED LAZY MC STOUT 30S  
RED LAZY MC STAR 185M  
RED LAZY MC SMASH 41N  
RED LAZY MC BESS 73N

RED HLH BUSTER 406 603  
RED BADLANDS KEEPSAKE 632  
RED TJA KING ROB 5K  
RED MANN BROS NANCY 15J

**Purebred.**



Consigned by: **Mann Bros Red Angus**

## 7 RED MANN BROS SLAM 18E

1978056 MABR 18E January 21, 2017

RED VGW GAME PLAN 816  
**RED SIX MILE GRAND SLAM 130Z**  
RED SIX MILE REBECCA 216X

RED BADLANDS MR BEEF 805  
**RED MANN BROS MISS MINY 18B**  
RED MANN BROS MISS MINY 18T

**BW 85 lbs**

**BW: -0.9 WW: 56 YW: 91 Milk: 16 TM: 44 CE: 5.7 MCE: 5.8**

RED VGW GAME PLAN 508  
RED VGW TW DOLL 0270  
RED SSS BUCC 30U  
RED WILBAR REBECCA 234M

RED HLH BUSTER 406 603  
RED BADLANDS KEEPSAKE 632  
RED SMW DIVIDE 82N  
RED MANN BROS MISS MINY 18J

**Purebred.**



Consigned by: **Mann Bros Red Angus**

## 8 RED MANN BROS CUT ABOVE 37E

1978057 MABR 37E January 21, 2017

RED LAZY MC COWBOY CUT 26U  
**RED LAZY MC CC CUT ABOVE 102Y**  
RED LAZY MC BESS 12S

RED PASQUIA ICON 34T  
**RED MANN BROS MISS MAY 37Z**  
RED MANN BROS MISS MAY 37T

**BW 88 lbs**

**BW: 0.3 WW: 60 YW: 97 Milk: 10 TM: 40 CE: 2.5 MCE: 4.6**

RED LAZY MC STOUT 30S  
RED LAZY MC STAR 185M  
RED LAZY MC SMASH 41N  
RED LAZY MC BESS 73N

RED LETTER ICON 1R  
RED PASQUIA FAYET 22L  
RED SSS CACHE 780L  
RED MANN BROS MISS MAY 31N

**Purebred.**



Consigned by: **Mann Bros Red Angus**

## 9 RED MANN BROS CUT ABOVE 5E

1978062 MABR 5E January 24, 2017

RED LAZY MC COWBOY CUT 26U  
**RED LAZY MC CC CUT ABOVE 102Y**  
RED LAZY MC BESS 12S

RED PASQUIA ICON 34T  
**RED MANN BROS LIT BEAM 5Z**  
RED MANN BROS LIT BEAM 5S

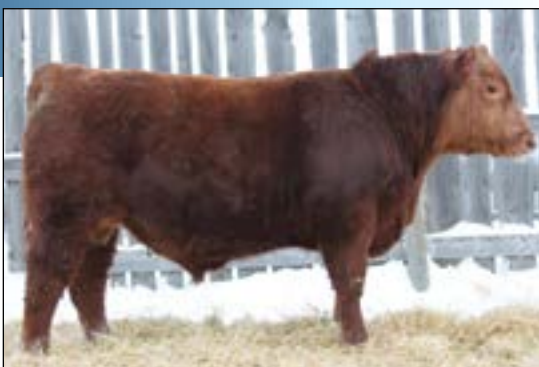
**BW 87 lbs**

**BW: -0.2 WW: 64 YW: 107 Milk: 12 TM: 44 CE: 4.7 MCE: 6.0**

RED LAZY MC STOUT 30S  
RED LAZY MC STAR 185M  
RED LAZY MC SMASH 41N  
RED LAZY MC BESS 73N

RED LETTER ICON 1R  
RED PASQUIA FAYET 22L  
RED BADLANDS MR BEEF 805  
RED LIT BEAM 5H

**Purebred.**



Consigned by: **Mann Bros Red Angus**



# RED ANGUS

## 10 RED MANN BROS CUT ABOVE 78E

1978064 MABR 78E January 26, 2017

RED LAZY MC COWBOY CUT 26U  
**RED LAZY MC CC CUT ABOVE 102Y**  
RED LAZY MC BESS 12S

RED GOAD SIN CITY 102'11  
**RED MANN BROS NANCY 75B**  
RED MANN BROS NANCY 75X

**BW 82 lbs**

**BW: -0.1 WW: 61 YW: 101 Milk: 20 TM: 51 CE: 4.1 MCE: 5.0**

RED LAZY MC STOUT 30S  
RED LAZY MC STAR 185M  
RED LAZY MC SMASH 41N  
RED LAZY MC BESS 73N

RED TER-RON WALKABOUT 161W  
RED KORAN GAMMA 207R 225  
RED BADLANDS MR BEEF 805  
RED MANN BROS NANCY 75N

**Purebred.**



Consigned by: **Mann Bros Red Angus**

## 11 RED MANN BROS CAPACITY 52E

1978065 MABR 52E January 26, 2017

RED UBAR HIGH CAPACITY 224  
**RED BADLANDS CAPACITY 37W**  
RED BADLANDS RED CEDAR 311

RED BADLANDS MR BEEF 805  
**RED MANN BROS LIT BEAM 5S**  
RED LIT BEAM 5H

**BW 86 lbs**

**BW: -0.3 WW: 68 YW: 105 Milk: 14 TM: 48 CE: 5.5 MCE: 4.7**

RED BJR HIGH CAPACITY 008  
RED BJR BONNEBELL 7G  
RED BADLANDS CUT ABOVE 012  
RED BADLANDS MEDORA 440

RED HLH BUSTER 406 603  
RED BADLANDS KEEPSAKE 632  
RED RUTHE USA SON 539  
RED MANN'S BESSIE MAJ 5D

**Purebred.**



Consigned by: **Mann Bros Red Angus**

## 12 RED MANN BROS CAPACITY 51E

1978067 MABR 51E January 27, 2017

RED UBAR HIGH CAPACITY 224  
**RED BADLANDS CAPACITY 37W**  
RED BADLANDS RED CEDAR 311

RED BADLANDS MR BEEF 805  
**RED MANN BROS BEAM 51U**  
RED MANN BROS BEAM 5N

**BW 89 lbs**

**BW: 0.4 WW: 67 YW: 107 Milk: 13 TM: 47 CE: 4.5 MCE: 4.1**

RED BJR HIGH CAPACITY 008  
RED BJR BONNEBELL 7G  
RED BADLANDS CUT ABOVE 012  
RED BADLANDS MEDORA 440

RED HLH BUSTER 406 603  
RED BADLANDS KEEPSAKE 632  
RED TJA KING ROB 5K  
RED LIT BEAM 5H

**Purebred.**



Consigned by: **Mann Bros Red Angus**

## 13 RED MANN BROS SHINE 61E

1978070 MABR 61E February 4, 2017

RED XO CROWFOOT SHINE 235Z  
**RED HOWE SHINE 12B**  
RED HOWE MISS STRETCH 76W

RED PASQUIA ICON 34T  
**RED MANN BROS SPARKLE 6W**  
RED MANN BROS SPARKLE 6N

**BW 87 lbs**

**BW: -0.2 WW: 64 YW: 91 Milk: 14 TM: 46 CE: 5.3 MCE: 4.1**

RED CROWFOOT MOONSHINE 8081U  
RED XO CROWFOOT REV ROSE 936W  
RED BAR-E-L RIBEYE 103R  
RED HOWE STRETCH 46P

RED LETTER ICON 1R  
RED PASQUIA FAYET 22L  
RED TJA KING ROB 5K  
RED MANN'S COLD SPARK MAJ 6D

**Purebred.**



Consigned by: **Mann Bros Red Angus**



# DUTTON FARMS PARTNERSHIP

## WHEAT

Carberry, Stettler, AAC Elie, AAC Brandon

## BARLEY

CDC Copeland, CDC Austenson

## FORAGE PEAS

Green and Yellow Pea Seed  
Call for Varieties

## CONTACT:

**DUTTON FARMS PARTNERSHIP**

**Vicki: 306.441.6699**

***Best of Luck to  
the Bull Sale!***

*Norsask*

FARM EQUIPMENT LTD.

**CASE II**

AGRICULTURE



WWW.NORSASKFARMEQUIPMENTLTD.COM

Jean  
Desmarais



Dianne  
Kufeldt

## Cut Knife Creek Enterprises

Livestock, Flatdeck, Grain, Machinery

Phone/Fax (306) 398-2851 • Cell (306) 398-7540

Box 101 • Cut Knife, Saskatchewan • S0M 0N0

e-mail: ckctrucking@gmail.com

*Classic Impressions*

Embroidery - Laser Engraving - Canvas Prints  
- Decals - Promotional Products - Awards  
- Corporate Apparel - Sportswear

*Let us help you promote your farm*

Gloria Bajema

climpressions@yahoo.ca

Phone/Fax (306) 843-2774

Wilkie, SK S0K 4W0

1-800-615-2774

## Yellow Head Modular Home Sales

☎ 306-496-7538 Stan 306-849-0002 Lynne

✉ affordablehomesales@sasktel.net

🌐 www.yellowheadmodularhomesales.ca

Box 323 Sheho, Sask. S0A 3T0 Fax 306-849-0003

## INVENTORY BLOW OUT!

1520 Sq ft - \$118,000

1216 Sq ft - \$103,000

1080 Sq ft - \$92,000

# POLLED HEREFORD

## 14 R&L 53A DODGE 117D

C03029647 RLH 117D April 3, 2016

FCC 3T RANSOM 7W (DLF IEF HYF)  
**GHC PROFILE 53A (DLF IEF HYF)**  
 GHC MISS BLANCHE ET 37S

FCC 7M PRIDE 3T  
 FCC 102M APRIL 6T (DLF IEF HYC)  
 GHC CHUNK 113L  
 KLONDIKE BEAUTY 789C

GHC PREMIER ET 90N  
**R&L 90N CHARM 10T (DLF IEF HYF)**  
 R&L 9F CHARM 91L

WTK 75A CONTINENTAL 66F  
 WALPOLE PHILIS 13F  
 R&L P183 FOUNDATION 9F  
 R&L 73F CHARM 90H

**BW 90 lbs**

**Purebred. Polled**

R&L 53A DODGE 117D is out of the Profile Bull and a Foundation cow. He is a smooth very correct bull with a 90lbs birth weight. He should produce some excellent females.



Consigned by: **R&L Heather Polled Herefords**

## 15 R&L 53A DRUM 152D

C03029648 RLH 152D April 3, 2016

FCC 3T RANSOM 7W (DLF IEF HYF)  
**GHC PROFILE 53A (DLF IEF HYF)**  
 GHC MISS BLANCHE ET 37S

FCC 7M PRIDE 3T  
 FCC 102M APRIL 6T (DLF IEF HYC)  
 GHC CHUNK 113L  
 KLONDIKE BEAUTY 789C

ZKMH 14R VEGAS 10U  
**R&L 10U NORA 104Y**  
 R&L 90N WHISPER 27W

ANL3N RIBEYE 14R  
 ZKMH 9K PENNY 6M  
 GHC PREMIER ET 90N  
 R&L 2L NORA 42N

**BW 100 lbs**

**Purebred. Polled**

R&L 53A DRUM 152D is out of a very good producing Ribeye cow. 152D is a smooth well-muscled bull. This bull has extra length and volume with a 100lb birth weight.



Consigned by: **R&L Heather Polled Herefords**

## 16 R&L 53A DUSTY 158D

C03029649 RLH 158D April 12, 2016

FCC 3T RANSOM 7W (DLF IEF HYF)  
**GHC PROFILE 53A (DLF IEF HYF)**  
 GHC MISS BLANCHE ET 37S

FCC 7M PRIDE 3T  
 FCC 102M APRIL 6T (DLF IEF HYC)  
 GHC CHUNK 113L  
 KLONDIKE BEAUTY 789C

ZKMH 14R VEGAS 10U  
**R&L 10U LIBBY 114Z**  
 R&L 90N LIBBY 39T

ANL3N RIBEYE 14R  
 ZKMH 9K PENNY 6M  
 GHC PREMIER ET 90N  
 R&L 73F LIBBY 76L

**BW 100 lbs**

**Purebred. Polled**

R&L 53A DUSTY 158D has a 100lb birth weight. 158D, like his sire, is a well-muscled bull with extra length and volume. He is out of an excellent Ribeye cow. You will like this bull.



Consigned by: **R&L Heather Polled Herefords**



## WEST CENTRAL PELLETING LTD.

TOTAL HERD PERFORMANCE

*"Your supplier of quality beef pellets"*

*Use pellets to extend your pasture and stockpile in the summer for great prices*

Wilkie, SK



For Product Information and Sales Please call



Wolseley, SK

1-866-422-2242

1-866-698-6401



# DUPEROW CO-OP

**Fuel · Agro · Hardware  
General Store · Duperow  
Cardlock · Biggar  
306-948-2706**



**Petroleum and Oil · Seed & Chemical  
Bins and Augers  
Hi Hog · Two W  
Cattle Handling Equipment  
Posts & Rough Lumber  
Barbwire & Fencing  
General Hardware  
Farm Hardware  
Feed & Salt  
Groceries  
Tires  
&  
Serving the Community  
Since 1944**

# TINGLEY'S HARVESTCENTER

**Lloydminster · Vegreville · North Battleford**

Call us @

306-445-8010

[www.tingleyshc.com](http://www.tingleyshc.com)

*From tillage to seeding through hay season & harvest we've got you covered*

**CLAAS**

**TINGLEY'S JCB**

**HORSCH**

**SEED MASTER**

**Elmer's MANUFACTURING**

**RICHIGER**

**MCCORMICK**

## Ramsay's Custom Hauling

- 53' Ground Load Cattle Semi
- 17 Bale Self-Load/Unload Bale Trucks
- 2 - 20' Gooseneck Stock Trailers
- High-Boy Bale Trailer
- Hay & Straw Sales

**Steve Ramsay**

**Brian Ramsay**

Ph: (306) 386-2213 or 386-2490

Cell: (306) 441-9327

Cochin, Saskatchewan



# OREN'S TRUCKING

• Auger Truck • Custom Hauling

**OREN ROBINSON**

**Box 370**

Landis, SK S0K 2K0

Phone (306) **658-4755**

Cell (306) **843-7020**

Fax (306) **658-2008**

Box 157  
North Battleford, SK S9A 2Y1  
[pfe2004@sasktel.net](mailto:pfe2004@sasktel.net)

**CALL US TODAY!**  
**306-445-2427**

## Parkland

*Farm Equipment (2004) Ltd.*



*Challenge*

**Kubota**

**MORRIS**

[www.parklandfarmequipment2004.ca](http://www.parklandfarmequipment2004.ca)

# SIMMENTALS

## 17 BAR A EXCALIBUR 8E

BPG1224802 WJM 8E January 8, 2017

WHEATLAND BULL 680S  
NEW TREND WAY COOL 6W  
KEYSTONE RADIANCE 13R

WHEATLAND BULL 131L  
WHEATLAND LADY 351N  
TCF/RCC TEMPTATION GJ640  
WAR DIVA M704

WHEATLAND BULL 932W  
PHEASANTDALE WILLOW 28Z  
PHEASANTDALE MS 12S

WHEATLAND BULL 680S  
ROCKY HILLS PICK  
TNT DYNAMITE BLACK L137  
BAR 15 MS PRIDE 7G-60K

**BW 96 lbs WW 850 lbs YW 1245 lbs Purebred. Polled**

This black blaze face bull will be sure to catch your eye. Sired by New Trend Way Cool 6W a bull to never disappoint in our operation, while his dam Pheasantdale Willow 28Z brings in a never miss calf every year. A breeding that was looked forward to all summer long. This long spined bull will add extra length and weight to his calves which will bring the premium we all shoot for come sale day. Yet his length is not all this powerhouse of a bull brings to the table. Soft pasterned and carrying all the muscle you want in all the right places, Excalibur is the bull for you.

**CE: 7.3 BW: 2.9 WW: 56.3 YW: 91.5 Milk: 23.6 MCE: 8.8 MWWT: 51.8**



Consigned by: **Bar A Simmentals**

## 18 BAR A ERNEST 10E

PG1224801 WJM 10E January 10, 2017

HOOKS SHEAR FORCE 38K  
MRL RED FORCE 12U  
MRL MISS 824S

NICHOLS BLK DESTINY G151  
C&D TRACY  
TNT DYNAMITE BLACK L137  
MRL MISS 443N

ANCHOR D CHURRO 21Z  
AFSM MS CINDY LANE 7C  
NCS MS UTOPIA 34U

FGAF BARBOSSA 707X  
GARREN'S TARA 21X  
SGCC RED STEW 5S  
MISS PAT LANE 10P

**BW 94 lbs WW 800 lbs YW 1220 lbs Purebred. Polled**

What a bull for a heifer's first calf! Every time we see this bull he keeps getting better and better. His sire Red Force 12U is a power bull that has passed on his muscle structure, powerful loin and width of top to Ernest 10E. His dam Cindy Lane 7C is a Fleckvieh influence female that definitely brings dimension of muscle and a soggy appearance to this bull. This bull is one of the most refined yet powerful muscled bulls we have had the privilege to raise. We hope you like Bar-A Ernest 10E as much as we do.

**CE: 14.3 BW: 1.5 WW: 68.2 YW: 105.0 Milk: 27.3 MCE: 7.6 MWWT: 61.4**



Consigned by: **Bar A Simmentals**

## 19 BAR A EXODUS 18E

PG1207238 WJM 18E January 18, 2017

WHEATLAND HIGHVOLTAGE122Y  
WHEATLAND CIRCUIT BREAKER  
WHEATLAND LADY 81X

WHEATLAND PREDATOR 922W  
WHEATLAND LADY 736 T  
STF DOMINANCE T171  
WHEATLAND LADY 902J

WFL IDENTITY 23X  
SUNNY VALLEY AMBER 63A  
HAAS RANCH U126

R PLUS REDGE 8018U  
WFL RED LICIOUS  
KBSR EASY MONEY R3  
HAAS RANCH J83

**BW 94 lbs WW 825 lbs YW 1210 lbs Purebred. Polled**

If you are looking for a bull to put power, red meat and hair into his calves Exodus 18E is the one. He has a soft set to his feet and legs while carrying his weight well in his pasterns which will cover some ground. His sire Wheatland Circuit Breaker is the red Simmental bull that took the industry by storm. Circuit Breaker sold for \$60,000 and is doing a great job at Outlaw Cattle Co. His dam Amber 63A is an Identity daughter coming from the heart of the Sunny Valley program. She is deep sided with a ton of milk.

**CE: 9.1 BW: 2.1 WW: 60.4 YW: 77.7 Milk: 16.7 MCE: 13.4 MWWT: 46.9**



Consigned by: **Bar A Simmentals**

**WITH A BUYER'S NUMBER, YOU ARE ELIGIBLE TO WIN  
ONE OF TWO \$500.00 CREDIT VOUCHERS TOWARDS YOUR  
PURCHASE OF A 2018 BULL.  
WINNERS WILL BE ANNOUNCED PRIOR TO THE SALE.**



# SIMMENTALS

**20**

## BDC ROCKER 1E

REG#-APPLIED FOR BDC 1E February 12, 2017

SPRINGCREEK ALL IN 155Y  
**SPRINGCREEK ROCKER 909A**  
 SPRINGCREEK GOLDY 135W

HART ALL IN W382  
 SPRINGCREEK BLK TESS 73T  
 TNT KNOCK OUT R206  
 SPRINGCREEK LINNE 6R

TWIN-CHIEF STING 114S  
**SFM 63W**  
 SFM 135K

TNT SURVIVOR K220  
 TWIN CHIEF MATTEL 114M  
 LPN CONAIR 37G  
 SFM 42G

**BW 104 lbs**

**Black Purebred. Polled.**

**Sept 3 weight: 1020 lbs Jan 24 weight: 1460 lbs**

1E and 3E are very much the same, wide topped, big hip, lots of hair and very easy to work with. Both bulls are polled. No creep feed.



Consigned by: **Bar Diamond Cattle**

**21**

## BDC SKORS CASINO 2E

REG#-APPLIED FOR BDC 2E February 14, 2017

LFE RED CASINO 3036X  
**SKORS CASINO 53C**  
 SKORS RED ROCKER 129Y

LFE BS LEWIS 322U  
 LFE DREAM LADY 112P  
 KOP CROSBY 137W  
 SKORS MS ROCKER 46T

STF STARQUEST N114  
**SFM 60R**  
 SFM 21L

STF MONTANA BLACK KF25  
 STF LEONA L260  
 LFE MR LEWIS 308J  
 SFM 155J

**BW 106 lbs**

**Red Purebred. Horned**

**Sept 3 weight: 850 lbs Jan 24 weight: 1155 lbs**

2E is smooth shouldered with wide top and a big hip, this red bull is horned. I kept a Casino heifer which is looking very good in the replacement pen. No creep feed.



Consigned by: **Bar Diamond Cattle**

**22**

## BDC ROCKER 3E

REG#-APPLIED FOR BDC 3E February 14, 2017

SPRINGCREEK ALL IN 155Y  
**SPRINGCREEK ROCKER 909A**  
 SPRINGCREEK GOLDY 135W

HART ALL IN W382  
 SPRINGCREEK BLK TESS 73T  
 TNT KNOCK OUT R206  
 SPRINGCREEK LINNE 6R

LAZY S RED POWERLINE 486S  
**SFM 105W**  
 SFM 6T

KENCO/MF POWERLINE 204L  
 MS LAZY S BLACK P 280L  
 WHEATLAND'S INFERNO 325N  
 SFM 9R

**BW 100 lbs**

**Black Purebred. Polled.**

**Sept 3 weight: 860 lbs Jan 24 weight: 1265 lbs**

3E and 1E are very much the same, wide topped, big hip, lots of hair and very easy to work with. Both bulls are polled. No creep feed.



Consigned by: **Bar Diamond Cattle**



**LIVESTOCK  
 HAULING**  
 403-741-8982  
 Daysland AB

**Doug Green**

**403.741.8982**

**dglivestockhauling@gmail.com**

# SIMMENTALS

**23**

## RRH EXCALIBUR 14E

PG1203223 RRH 14E February 17, 2017

HARVIE JDF WALLBANGER111X  
**SUNNY VALLEY SIRLOIN 16B**  
 GGRR 1R BLK DESTINY 4T

SHS ENTICER P1B  
 JDF PEPSI 61U  
 REMINGTON RED LABEL HR  
 SNIDER'S MISS 30 BELOW

WPT MR RED ZONE 12Z  
**WPT MS COLA 4C**  
 MS TOPGUN LANE 2X

TNT TOP GUN R244  
 HWY 5 MINERS DAUGHTER 51P  
 TNT TOP GUN R244  
 MISS SHAWACRES 10J

**BW 100 lbs WW 684 lbs YW 1245 lbs Polled. Purebred.**

Excalibur is a bull that was easy to notice all summer long. Off of a smaller framed heifer he has done very well. He has lots of hair with a big hip and good foot just like his dad.

**CE: 6.1 BW: 5.7 WW: 80.8 YW: 121.1 Milk: 18.4 MCE: 4.0 MWWT: 58.8**



Consigned by: **Double R Simmentals**

**24**

## RRH EXTRA 4E

PG1203219 RRH 4E January 19, 2017

HARVIE JDF WALLBANGER111X  
**SUNNY VALLEY SIRLOIN 16B**  
 GGRR 1R BLK DESTINY 4T

SHS ENTICER P1B  
 JDF PEPSI 61U  
 REMINGTON RED LABEL HR  
 SNIDER'S MISS 30 BELOW

MFR OVERFLOW 29X  
**WPT MS ZLINCOLN 57Z**  
 MS BGS LINDSEY 183L

RLA REDSTREAM 152S  
 HRC RED REBECCA 6R  
 DOUBLE BAR D LINCOLN  
 MS BGS 229G

**BW 89 lbs WW 752 lbs YW 1280 lbs Horned. Purebred.**

Extra is a well built bull, he is long and smooth sided. He has excellent feet and legs and travels real nice. His sire, Sunny Valley Sirloin, is our top walking bull. We have used him extensively on the purebred and commercial cows, he has 3 sons at the sale. We have calved out his heifers and they are well tempered with nice udders.

**CE: 7.4 BW: 3.0 WW: 64.8 YW: 92.7 Milk: 26.9 MCE: 6.9 MWWT: 59.3**



Consigned by: **Double R Simmentals**

**25**

## RRH EPIC 5E

PG1203215 RRH 5E January 19, 2017

LFE BLACK LAKOTA 385W  
**NUG ROYAL RED 324A**  
 TRIPLE C SMARTY PANTS R

R PLUS BLACKEDGE  
 KJLI RAZZLE DAZZLE 628R  
 TRIPLE C EL PODEROSO REY  
 GFI GRAMMS DELIGHT L17

MR GJR HUSTLER 16W  
**GJR MISS 3Z**  
 GJR MISS 2N

ACC1 HUSTLER 2N  
 MISS GJR MARA 7M  
 STF JALAPENO  
 MISS GJR KNIGHT 18H

**BW 105 lbs WW 672 lbs YW 1200 lbs Polled. Purebred.**

Epic is a Royal Red son that is put together just right. He is long, smooth and cherry red with good feet and legs. He will look good out with your cows.

**CE: 4.0 BW: 4.3 WW: 56.2 YW: 83.5 Milk: 17.5 MCE: 4.0 MWWT: 45.6**



Consigned by: **Double R Simmentals**

**26**

## RRH ELDORADO 9E

PG1203224 RRH 9E January 31, 2017

HARVIE JDF WALLBANGER111X  
**SUNNY VALLEY SIRLOIN 16B**  
 GGRR 1R BLK DESTINY 4T

SHS ENTICER P1B  
 JDF PEPSI 61U  
 REMINGTON RED LABEL HR  
 SNIDER'S MISS 30 BELOW

REMINGTON RED MILE 651Y  
**SUN STAR RETRO 30C**  
 SUN STAR RETRO 110X

JF MILESTONE 999W  
 TRIPLE C SMARTY PANTS R  
 REMINGTON PROWLER 111T  
 SUN STAR RETRO 49R

**BW 89 lbs WW 720 lbs YW 1405 lbs Polled. Purebred.**

Eldorado is another Sirloin son that is real easy to look at. Nice hip, wide across the back and a ton of hair. He is probably the best bull I have raised. He comes from a first calf heifer that is an awesome mom lots of milk in a nice tight bag. Be sure to come check him out on sale day.

**CE: 6.5 BW: 3.9 WW: 78.9 YW: 118.3 Milk: 21.2 MCE: 7.1 MWWT: 60.7**



Consigned by: **Double R Simmentals**



# CHAROLAIS

## 27 DPS AZTEC 1E

MC722764 DPS 1E January 07, 2017

LT LEDGER 0332 P  
**CIRCLE CEE LEGEND 307A**  
 CIRCLE CEE STUNNING 125Y

LT BLUEGRASS 4017 P  
 LT BRENDA 6120 PLD  
 D R REVELATION 467  
 HFCC WHITE PROMISE 34L

SPARROWS ELDORADO 361L  
**DPS DARCY 1C**  
 MXS CHERI 303A

SPARROWS ALLIANCE 513G  
 SPARROWS HEARTBREAK 261J  
 MERIT ROUNDUP 9508W  
 MXS CHERI 182Y

**BW 72 lbs** **Purebred. Double Polled**

**Adj 205 Day Wt: 731 lbs Dec 23, 2017 Wt: 1175 lbs**

Double vaccinated with Fusogard for footrot.

**BW: -6.6 WW: 42 YW: 81 Milk: 17 TM: 38**



Consigned by: **Swistun Charolais**

## 28 DPS GUSTO 5E

MC722731 DPS 5E January 14, 2017

LT LEDGER 0332 P  
**LT SUNDANCE 2251 PLD**  
 LT BALLET 9219 POLLED

LT BLUEGRASS 4017 P  
 LT BRENDA 6120 PLD  
 LT EASY PRO 1158 PLD  
 LT BALLET 6233

SOS POLLED DETONATOR 8M  
**MXS MAUDE 808U**  
 MXS MAUDE 103L

LHD MR PERFECT Y416  
 P-3 LADY MONTE 0-80Z  
 LT WYOMING WIND 4020 PLD  
 MXS MAUDE 187F 911J

**BW 103 lbs** **Purebred. Double Polled**

**Adj 205 Day Wt: 824 lbs Dec 23, 2017 Wt: 1345 lbs**

Double vaccinated with Fusogard for footrot.

**BW: 0.7 WW: 54 YW: 97 Milk: 23 TM: 50**



Consigned by: **Swistun Charolais**

## 29 DPS MERCURY 6E

MC722767 DPS 6E January 15, 2017

LT LEDGER 0332 P  
**CIRCLE CEE LEGEND 307A**  
 CIRCLE CEE STUNNING 125Y

LT BLUEGRASS 4017 P  
 LT BRENDA 6120 PLD  
 D R REVELATION 467  
 HFCC WHITE PROMISE 34L

CEDARDALE ZEAL 125Z  
**DPS SKY 12C**  
 DPS HOLLY 18X

CEDARDALE TYRANT 31T  
 CEDARDALE MISS 64T  
 PLEASANTDAWN MARSHALL70P  
 MXS BEAUTY 740T

**BW 78 lbs** **Purebred. Scurred**

**Adj 205 Day Wt: 817 lbs Dec 23, 2017 Wt: 1280 lbs**

Double vaccinated with Fusogard for footrot.

**BW: -4.4 WW: 47 YW: 86 Milk: 22 TM: 46**



Consigned by: **Swistun Charolais**

### 4T CONTRACTORS INC.

**Wendell Trotchie**

(306) 222-8197

(306) 329-4485

Fax: (306) 329-2453

4tcontractorsinc@sasktel.net

Box 32

Asquith, SK S0K 0J0



### Bobcat Services

- Build cattle, big game fence & corrals
- Pound posts
- Drill holes
- Clean corrals 4 spreaders & 2 Bobcats with rubber tracks
- Custom mulching
- Metal & vinyl siding
- Metal & asphalt roofs
- Will build additions on homes, cattle sheds, shops, etc.

**No job is too small, we do any kind of work.**

# CHAROLAIS

**30**

## DPS ECLIPSE 10E

MC722768 DPS 10E January 17, 2017

LT LEDGER 0332 P  
**CIRCLE CEE LEGEND 307A**  
 CIRCLE CEE STUNNING 125Y

LT BLUEGRASS 4017 P  
 LT BRENDA 6120 PLD  
 D R REVELATION 467  
 HFCC WHITE PROMISE 34L

MXS CANYON 136Y  
**DPS FRENCH FRY 13C**  
 MXS BEAUTY 740T

SPARROWS LANDMARK 963W  
 MXS EXCLUSIVE GRACE 826H  
 SVY DELIVERANCE PLD 401P  
 MXS BEAUTY 422P

**BW 81 lbs**  
**Adj 205 Day Wt: 854 lbs Dec 23, 2017 Wt: 1355 lbs**  
 Double vaccinated with Fusogard for footrot.  
**BW: -4.6 WW: 47 YW: 89 Milk: 27 TM: 31**

**Purebred. Double Polled**



Consigned by: **Swistun Charolais**

**31**

## DPS FRONTIER 14E

MC722726 DPS 14E January 19, 2017

CEDARDALE TYRANT 31T  
**CEDARDALE ZEAL 125Z**  
 CEDARDALE MISS 64T

DBAR SURVIVOR 220M  
 CEDARDALE MEMORABLE 19M  
 HFCC CALYPSO 1N  
 CEDARDALE PROSPECT 5P

PLEASANTDAWN MARSHALL70P  
**DPS DOLLY 5X**  
 DPS MISS PERFECTION 3L

LEK ARNOLD 14J  
 PLEASANT DAWN GERI 702J  
 P-3 PERFECT LAD 3-203C  
 DPS MISS MONTE THE II 3E

**BW 97 lbs**  
**Adj 205 Day Wt: 808 lbs Dec 23, 2017 Wt: 1275 lbs**  
 Double vaccinated with Fusogard for footrot.  
**BW: -1.6 WW: 42 YW: 73 Milk: 17 TM: 38**

**Purebred. Double Polled**



Consigned by: **Swistun Charolais**

**32**

## DPS ROCKET 21E

MC722740 DPS 21E January 28, 2017

CEDARDALE TYRANT 31T  
**CEDARDALE ZEAL 125Z**  
 CEDARDALE MISS 64T

DBAR SURVIVOR 220M  
 CEDARDALE MEMORABLE 19M  
 HFCC CALYPSO 1N  
 CEDARDALE PROSPECT 5P

MERIT ROUNDUP 9508W  
**MXS DIANNE 216Z**  
 MXS DIANNE 715T

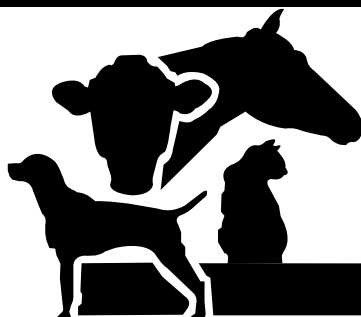
MXS VERMILLION 527R  
 MERIT YOLANDA 7244T  
 SVY DELIVERANCE PLD 401P  
 MXS CHATATETA 254M

**BW 100 lbs**  
**Adj 205 Day Wt: 783 lbs Dec 23, 2017 Wt: 1265 lbs**  
 Double vaccinated with Fusogard for footrot.  
**BW: -1.5 WW: 43 YW: 77 Milk: 14 TM: 36**

**Purebred. Scurred**



Consigned by: **Swistun Charolais**



# Unity Veterinary Services

**Dr. Travis Ducherer • Dr. Jean Pitura**

**Ph: 306-228-2491**



# CHAROLAIS

## 33

### DPS GOLDBAR 25E

MC722750 DPS 25E January 31, 2017

ACC I AM LEGEND 914W  
GBROS AUGUSTUS 348A  
G. BROS RELAY 223Y

MERIT ROUNDUP 9508W  
MXS CHERI 303A  
MXS CHERI 182Y

BW 76 lbs

Adj 205 Day Wt: 828 lbs Dec 23, 2017 Wt: 1240 lbs

Double vaccinated with Fusogard for footrot.

BW: -2.1 WW: 40 YW: 79 Milk: 14 TM: 34

SPARROWS SANCHEZ 715T  
SPARROWS TEMPEST 174K  
SOS REVENGE PLD 27W  
G. BROS PUDDGE 138W

MXS VERMILLION 527R  
MERIT YOLANDA 7244T  
MXS HEADLINE 904W  
MXS CHERI 212G 768T

Purebred. Twin. Double Polled



Consigned by: **Swistun Charolais**

## 34

### DPS ASH 28E

MC722760 DPS 28E February 3, 2017

SVY FREEDOM PLD 307N  
SVY FOCUS PLD 15X  
SVY STARDUST 811U

WHITECAP TRILOGY 204T  
DPS ABRA 30B  
RPJ AMANDA 1105Y

BW 87 lbs

Adj 205 Day Wt: 819 lbs Dec 23, 2017 Wt: 1160 lbs

Double vaccinated with Fusogard for footrot.

BW: -2.8 WW: 34 YW: 61 Milk: 25 TM: 42

HFCC PLD EVOLUTION 5L  
SVY PURRFECT 184L  
LT RIO BLANCO 1234 P  
SVY STARDUST 390N

ROLLING D PARAMOUNT 424P  
WHITECAP LASS 124J  
MXS ALLEGRO 701T  
GPA AMANDA 247M

Purebred. Double Polled



Consigned by: **Swistun Charolais**

## 35

### DPS VENUS 40E

MC722763 DPS 40E February 18, 2017

ACC I AM LEGEND 914W  
GBROS AUGUSTUS 348A  
G. BROS RELAY 223Y

JDJ SMOKESTER J1377 P ET  
MXS SMOKEN MAID 487B  
MXS LANDMARK'S MAID 130Y

BW 80 lbs

Adj 205 Day Wt: 692 lbs Dec 23, 2017 Wt: 1025 lbs

Double vaccinated with Fusogard for footrot.

BW: -3.0 WW: 36 YW: 66 Milk: 22 TM: 40

SPARROWS SANCHEZ 715T  
SPARROWS TEMPEST 174K  
SOS REVENGE PLD 27W  
G. BROS PUDDGE 138W

LHD CIGAR E46  
JD MS COMMANDER B309  
SPARROWS LANDMARK 963W  
MXS MIKADO'S MAID 141L

Purebred. Double Polled



Consigned by: **Swistun Charolais**

## 36

### DPS AERO 47E

MC722727 DPS 47E March 14, 2017

ACC I AM LEGEND 914W  
GBROS AUGUSTUS 348A  
G. BROS RELAY 223Y

SVS NOBLEMAN 25N  
DPS CINNAMON 4X  
DPS WINDSTAR 7U

BW 95 lbs

Adj 205 Day Wt: 753 lbs Dec 23, 2017 Wt: 1010 lbs

Double vaccinated with Fusogard for footrot.

BW: -3.1 WW: 34 YW: 66 Milk: 26 TM: 43

SPARROWS SANCHEZ 715T  
SPARROWS TEMPEST 174K  
SOS REVENGE PLD 27W  
G. BROS PUDDGE 138W

MSW Y2K  
HC VERONICA 11K  
LT WYOMING WIND 4020 PLD  
DPS MISS DETONATOR 9S

Purebred. Double Polled



Consigned by: **Swistun Charolais**

# LIMOUSIN

## 37 LAZY A DONATELLO

CPM4080255 LBZ 36D (LE) March 4, 2016

DIAMOND C YOU'RE COOL  
**RICHMOND ARDON SRD 79A**  
 RICHMOND XTRAVAGANT SRD 115X

GREENWOOD PLD Y WAVE  
**LAZY A AMBER**  
 ELIAN POLLED XTINA

DIAMOND C WAY COOL  
 DIAMOND C WEDDING CRASHER  
 NORDAL TRENDSETTER  
 JYF NIRVANA

GREENWOOD PLD TIDAL WAVE  
 GREENWOOD POSTER GIRL  
 FBR BABEYS UNDERTAKER 5U  
 ELIAN TEMPTATION

**BW 95 lbs Adj 205 Day Wt: 715 lbs 95% Purebred. Double Polled.**  
**Adj 365 Day Wt: 1029 lbs Jan. 4/2018 SC: 36cm**

This bull has been catching our eye since birth. Traditional in colour, he has tremendous length of body and hind quarter; big-footed and easy moving. His dam is a half sister to our Lazy A Desire Me, who was Reserve Junior Female Champion at Canadian Western Agrihition 2017. He is a powerhouse from our top pedigrees.

**GES: -1.5 CE: 6 BW: 2.7 WW: 74 YW: 102 Milk: 24 DOC: 19**



Consigned by: **Lazy A Limousin**

## 38 LAZY A DOC WALKER

CPM4080254 LAZ 21D (LE) March 16, 2016

DIAMOND C YOU'RE COOL  
**RICHMOND ARDON SRD 79A**  
 RICHMOND XTRAVAGANT SRD 115X

ELIAN POLED XPLOER  
**LAZY A ZELINA**  
 ELIAN POLLED XCELLO

DIAMOND C WAY COOL  
 DIAMOND C WEDDING CRASHER  
 NORDAL TRENDSETTER  
 JYF NIRVANA

RICHMOND TARZAN SRD 55T  
 ELIAN UNSURPASSABLE  
 ELIAN POLLED NINJA  
 DIAMOND J'S MISS WYATT

**BW 92 lbs Adj 205 Day Wt: 765 lbs 96% Purebred. Double Polled.**  
**Adj 365 Day Wt: 1047 lbs Jan. 4/2018 SC: 37.5cm**

We have been so impressed with the calves produced by our new herd sire Richmond Ardon SRD79A. Doc Walker is a perfect copy of his sire - blessed with length of body, wide-topped, a smooth shoulder and docility. His dam is one of our favorites with milk EPD of 38.

**GES: -0.9 CE: 7 BW: 2.4 WW: 72 YW: 102 Milk: 30 DOC: 23**



Consigned by: **Lazy A Limousin**

## 39 LAZY A DOMINIK

CPM4081172 LAZ 5D (LE) March 29, 2016

DIAMOND C YOU'RE COOL  
**RICHMOND ARDON SRD 79A**  
 RICHMOND XTRAVAGANT SRD 115X

RICHMOND TARZAN SRD 55T  
**ELIAN POLLED XAGGERATE**  
 ELIAN POLLED U R DESIREAB

DIAMOND C WAY COOL  
 DIAMOND C WEDDING CRASHER  
 NORDAL TRENDSETTER  
 JYF NIRVANA

RICHMOND PRIDE SRD 201P  
 LAZY S SSK 94L  
 ROMN JUSTICE  
 ELIAN SCARLET ROSE

**BW 103 lbs Adj 205 Day Wt: 759 lbs 95% Purebred. Double Polled.**  
**Adj 365 Day Wt: 1083 lbs Jan. 4/2018 SC: 37cm**

Dominik is a laid back cherry red bull with style. Wide topline, smooth shoulder, big scrotal and lots of hair are just a few of this boy's best qualities. His dam has been one of our best bull producers.

**GES: -1.1 CE: 5 BW: 3.7 WW: 75 YW: 107 Milk: 26 DOC: 26**



Consigned by: **Lazy A Limousin**

## 40 LAZY A DENVER

CPM4080257 LBZ 321D (LE) February 19, 2016

WULFS XTRACTOR X233X  
**PINNACLE'S ALL IN 12A**  
 TMF MISS 2X

HSF UNDERTAKER  
**LIMOLYN ABIGAIL**  
 LIMOLYN TENDERLUV

WULFS TITUS 2149T  
 WULFS MYRLENE 2332M  
 TOP MEADOW TEMPLATE 18T  
 TMF RISING STAR 18R

AUTO DOLLAR GENERAL 122R  
 HIGHLAND POP STAR  
 ANDERS PACKIN HEAT  
 LIMOLYN LAURA

**BW 80 lbs Adj 205 Day Wt: 743 lbs 93% Purebred. Double Polled.**  
**Adj 365 Day Wt: 1004 lbs Jan. 4/2018 SC: 36cm**

We bought Denver's dam because she was bred to a calving ease sire. She didn't disappoint us - she gave us twins! Both Denver and his red twin are quiet smooth fronted bulls with nice hind quarters and big scrotal. Can be used on cows or heifers.

**GES: -3.8 CE: 6 BW: 1.4 WW: 67 YW: 96 Milk: 28 DOC: 22**



Consigned by: **Lazy A Limousin**



Both cows and calves require minerals in their diet year round.  
Feeding CO-OP® Cattle Range Mineral offers important benefits to your operation.



## Discovery Co-op Agro Centre

Phone 306-446-7288

Calving and Animal Health, Feed, Vitalix & Hi-Hog

## CAP & KELLN Solar Pumps

Clear Solutions.  
Natural Choice.



FLOATING PUMPS  
SUBMERSIBLE  
PUMPS

- Pumping Systems
- Water Storage Tanks
- Solar Pumping Systems
- Valves and Fittings
- Pasture Water Lines
- Pressure Tanks
- Ritchie Water Bowls
- System Design Work & Quotations
- Constant Pressure Pumping Systems

Call Anderson Pump House Ltd. Today!



**Anderson  
Pump House Ltd.**

937-7741 or 1-800-263-7741  
9802 Thatcher Avenue North Battleford, SK  
www.andersonpumphouse.com

## PASTURE PIPELINES



# Arnold's

**SAND & GRAVEL LTD.**

**CORRAL CLEANING & SAFETY INSPECTION STATION**

**ARNOLD POOLE**

**STEVEN DUNLOP**

Cell: (306) 441-1693

Cell: (306) 441-1628

Box 304 • Edam, SK S0M 0V0    Bus: (306) 397-5555 • Fax: (306) 397-5556

## BATTLEFORDS ANIMAL HOSPITAL

Dr. T. Schmidt • Dr. S. Carley • Dr. I. Dedden

306-446-8387

#7A 11204 Railway Avenue East • North Battleford, SK S9A 2R7



# BLACK ANGUS

## 41 HIGH TREE DOWN RIVER 55D

1917402 JRH 55D February 22, 2016

S A V FINAL ANSWER 0035  
**THOMAS POWDER RIVER 9053**  
 THOMAS CAROL 7595

SITZ TRAVELER 8180  
 S A V EMULOUS 8145  
 RITO 112 OF 2536 RITO 616  
 THOMAS CAROL 1246

CONNEALY BOTTOMLINE  
**JRH BLACKCAP 25N**  
 MINBURN POKEY 152K

CONNEALY DATELINE  
 ROSIE OF CONANGA  
 MINBURN FAME 50H  
 MINBURN BLACKBIRD 117H

**BW: 92 lbs Adj 205 Day WT: 674 lbs** **Purebred.**

JRH 55D a deep big framed two year old, with an awesome pedigree, off of the no miss 25N cow that has a great disposition.

**BW: 1.7 WW: 50 YW: 82 Milk: 23 TM: 48 CE: 5.0 MCE: 7.0**



Consigned by: **High Tree Cattle**

## 42 HIGH TREE ABERDEEN 147D

1917423 JRH 147D March 10, 2016

TC ABERDEEN 759  
**HIGH TREE ABERDEEN 230B**  
 HIGH TREE POKEY 55Z

C R A BEXTOR 872 5205 608  
 TC BLACKBIRD 4034  
 HOFF FIRST EDITION 058 242  
 JRH BLACKCAP 25N

EARLY SUNSET 1024 BANDO 103R  
**HIGH TREE LUCKY 47U**  
 YOR LUCKY 12E

S A V 5175 BANDO 1024  
 ANKONY LUCY 0B18  
 TC STOCKMAN 2164  
 YOR LUCKY 2C

**BW 88 lbs Adj 205 Day WT: 610 lbs** **Purebred.**

JRH 147D a smooth made two year old bull going back to TC Aberdeen and TC Stockman

**BW: 0.3 WW: 32 YW: 56 Milk: 21 TM: 37 CE: 8.0 MCE: 9.0**



Consigned by: **High Tree Cattle**

## 43 HIGH TREE MOTIVE 287E

2013750 JRH 287E February 2, 2017

HF KODIAK 5R  
**SOO LINE MOTIVE 9016**  
 TLA BEAUTY 5R

SANDY BAR ADVANTAGE 43M  
 WILBAR RUBY 955N  
 RR 7407 RAINMAKER 2154  
 TERRLENE BEAUTY 35F

HOOVER EMPEROR  
**HIGH TREE SUSAN 223C**  
 HIGH TREE SUSAN 123Y

SYDGEN C C & 7  
 BLKCP EMPRESS ELLSTON G403  
 TC STOUT 407  
 HIGH TREE SUSAN 79T

**BW 82 lbs Adj 205 Day WT: 720 lbs** **Purebred.**

JRH 287E has the thickness an phenotype you would expect from a Sooline Motive. His grand dam is an own daughter of TC Stout and is a big soft made tank of a cow.

**BW: 1.4 WW: 56 YW: 96 Milk: 29 TM: 57 CE: 6.5 MCE: 2.5**



Consigned by: **High Tree Cattle**



Cloan View  
 Grain Cleaning

For more details and pricing phone

**Blake Wakelin**

**at 306-398-2888, evenings or 306-843-7491, days**

### Mobile Grain Cleaning

Save on trucking costs, let us come to you!

- Wheat
- Peas
- Barley
- Oats
- Lentils
- And More



Book Now  
 to ensure that  
 your grain gets  
 cleaned **BEFORE**  
 seeding.



# BLACK ANGUS

## 44 HIGH TREE DOULBE VISION 164E

1973622 JRH 164E February 10, 2017

CONNEALY REFLECTION  
JINDRA DOUBLE VISION  
HOFF RACHEL 8312 405

BON VIEW NEW DESIGN 878  
HAPPY GRILL OF CONANGA 6260  
HOFF LIMITED EDITION SC 594  
HOFF MISS EXPO S C 4223

S A V BISMARCK 5682  
HIGH TREE FAVORITE 128W  
HIGH TREE FAVORITE 82T

G A R GRID MAKER  
S A V ABIGALE 0451  
HIGH TREE EXTRA 55R  
EARLY SUNSET FAVORITE 70P

**BW 85 lbs Adj 205 Day WT: 670 lbs**

**Purebred.**

JRH 164E is a complete moderate framed Double Vision son out of a very maternal Bismarck dam.

**BW: 1.2 WW: 51 YW: 91 Milk: 25 TM: 51 CE: 8.0 MCE: 14**



Consigned by: **High Tree Cattle**

## 45 HIGH TREE PROGRAM 182E

1973625 JRH 182E February 11, 2017

HA FUTURE DIRECTION 3540  
HA PROGRAM 5652  
HA BLACKCAP LADY 2782

C A FUTURE DIRECTION 5321  
H A 4167 LADY 1013  
SITZ ALLIANCE 6595  
H A BLACKCAP LADY 5166

BON VIEW NEW DESIGN 878  
HIGH-TREE FAVORITE 82X  
EARLY SUNSET FAVORITE 70P

B/R NEW DESIGN 036  
BON VIEW GAMMER 85  
A L C KNOX Z15K  
EARLY SUNSET FAVORITE 80H

**BW 78 lbs Adj 205 Day WT: 741 lbs**

**Purebred.**

JRH 182E a easy doing, big bodied, and heavily muscled HA Program son, with a very attractive BW

**BW: 0.2 WW: 49 YW: 83 Milk: 29 TM: 54 CE: 11.0 MCE: 13.0**



Consigned by: **High Tree Cattle**

## 46 HIGH TREE MOTIVATION 254E

1973628 JRH 254E February 13, 2017

SOO LINE MOTIVE 9016  
WERNER EA MOTIVATION 2031  
WERNER ROYAL LASS 4218

HF KODIAK 5R  
TLA BEAUTY 5R  
ANKONIAN WERNER WILD FIRE 96  
SYDGEN ROYAL LASS 418

BOYD NEW DAY 8005  
HIGH TREE ELSA ERICA 214A  
HIGH TREE ELSA ERICA 63Y

A A R NEW TREND  
S V F FOREVER LADY 57D  
NICHOLS QUIET LAD T9  
TAF V8 ELSA ERICA 135P

**BW: 82 lbs Adj 205 Day WT: 703 lbs**

**Purebred.**

JRH 254E a long spined athletic, very sound and complete son of Motivation out of a hard working New Day cow.

**BW: 0.6 WW: 55 YW: 99 Milk: 20 TM: 48 CE: 8.0 MCE: 7.0**



Consigned by: **High Tree Cattle**

Ron Toews

# NORTHWEST TUBGRINDING

Serving Saskatchewan Cattlemen

306-883-7124

Box 495 Leoville SK S0J 1N0

rtoews63@gmail.com

# BLACK ANGUS

**47**

## **TTT SMOOTH 705**

1959106 TAB 5E February 10, 2017

WK SMOOTH 2382  
**HF SMOOTH 90C**  
 HF TIBBIE 70X  
  
 WIWA CREEK MONARCH 53'08  
**TTT LADY ERICA 20C**  
 TTT LADY ERICA 12S  
**BW 88 lbs**

SYDGEN DOC 9017  
 THOENE IN FOCUS 763  
 HF TIGER 5T  
 HF TIBBIE 91P  
  
 SWITZ MONARCH 7R  
 WIWA CREEK ERICA 81'06  
 BOYD NEW DAY 8005  
 TTT ERICA 2L

Purebred.

BW: 3.7 WW: 43 YW: 76 Milk: 25 TM: 47 CE: 2.0 MCE: 5.0



Consigned by: **Triple T Farm**

**48**

## **TTT MONARCH 710**

1959103 TAB 10E February 12, 2017

SWITZ MONARCH 7R  
**WIWA CREEK MONARCH 53'08**  
 WIWA CREEK ERICA 81'06  
  
 COLE CREEK CEDAR RIDGE 1V  
**TTT GAMMER 6B**  
 TTT GAMMER 2W  
**BW 90 lbs**

SHARP MONARCH 56M  
 WIWA CREEK TINA 26D 7'99  
 SAR STOCKMAN 84L  
 THOMASON ERICA 45J  
  
 COLE CREEK BLACK CEDAR 46P  
 COLE CREEK CLOVANADA 49S  
 CONNEALY VISION 63  
 TTT GAMMER 5T

Purebred.

BW: 1.9 WW: 33 YW: 56 Milk: 25 TM: 42 CE: 5.0 MCE: 7.0



Consigned by: **Triple T Farm**

**49**

## **TTT SMOOTH 707**

1959101 TAB 7E February 12, 2017

WK SMOOTH 2382  
**HF SMOOTH 90C**  
 HF TIBBIE 70X  
  
 EXAR UPSHOT 0562B  
**TTT WINNIE 6A**  
 TTT WINNIE 7S  
**BW 88 lbs**

SYDGEN DOC 9017  
 THOENE IN FOCUS 763  
 HF TIGER 5T  
 HF TIBBIE 91P  
  
 SITZ UPWARD 307R  
 EXAR BARBARA T020  
 BOYD NEW DAY 8005  
 BIG SKY WINNIE 482

Purebred.

BW: 2.6 WW: 36 YW: 74 Milk: 22 TM: 40 CE: 4.0 MCE: 7.0



Consigned by: **Triple T Farm**

**RN DOORS**  
 INSTALLATION SALES & SERVICE  
 RESIDENTIAL & COMMERCIAL

Box 115  
 Cando, SK S0K 0V0

**Randy Anthofer**  
**Nancy Stewart**

Home: **306.937.2890**  
 Cell: **306.843.7021**



# BLACK ANGUS

**50**

## TTT MONARCH 709

1959100 TAB 9E February 15, 2017

SWITZ MONARCH 7R  
**WIWA CREEK MONARCH 53'08**  
 WIWA CREEK ERICA 81'06

CONNELY THUNDER  
**TTT ERICA 2A**  
 TTT ERICA 5X

**BW 89 lbs**

SHARP MONARCH 56M  
 WIWA CREEK TINA 26D 7'99  
 SAR STOCKMAN 84L  
 THOMASON ERICA 45J

BALDRIDGE KABOOM K243 KCF  
 PARKA OF CONANGA 241  
 TC FOREMAN 016  
 BIG SKY ERICA 480

**Purebred.**

**BW: 2.2 WW: 39 YW: 65 Milk: 23 TM: 43 CE: 3.0 MCE: 10.0**



Consigned by: **Triple T Farm**

**51**

## TTT MONARCH 712

1959096 TAB 12E February 21, 2017

SWITZ MONARCH 7R  
**WIWA CREEK MONARCH 53'08**  
 WIWA CREEK ERICA 81'06

S A V 004 DENSITY  
**TTT GAMMER 8X**  
 TTT GAMMER 1S

**BW 89 lbs**

SHARP MONARCH 56M  
 WIWA CREEK TINA 26D 7'99  
 SAR STOCKMAN 84L  
 THOMASON ERICA 45J

S A V 8180 TRAVELER 004  
 S A V MAY 7238  
 CRESCENT CREEK QUANTUM 71N  
 MINBURN GAMMER 99P

**Purebred.**

**BW: 2.1 WW: 32 YW: 52 Milk: 22 TM: 38 CE: 5.0 MCE: 7.0**



Consigned by: **Triple T Farm**



Get financing  
 that's flexible

306-446-1700  
 fcc.ca

**NORTHWEST'S BULL SALE 2018  
WOULD LIKE TO THANK THE FOLLOWING BUSINESSES  
FOR THEIR JACKET SPONSORSHIP.**

**Turtleford & District Co-op**

*Turtleford 306-845-2162*

**Cavalier Agrow Ltd.**

*Meota 306-892-2476*

**West Central Pelleting Ltd.**

*Wilkie 306-843-3399*

**Valley Ford Sales**

*North Battleford 306-445-4491*

**Maxim Custom Spraying Inc.**

*Arron Lorenz - Wilkie - 306-843-7465*

**AGRI Team Services Inc.**

*Hafford 306-246-4300 Glaslyn 306-342-4522*

**Masterfeeds - An Altech Company**

*Roger Kostron 306-491-9096*

**Moody's Equipment**

*Perdue 306-237-4272*

**Bernie's Grain Hauling Ltd.**

*North Battleford 306-441-6185*

**Alliance Genetics**

*Prince Albert 306-930-8684*

**Fountain Tire**

*North Battleford 306-445-2323*



**RISROCK AG**  
SERVICES INC

Boyd & Karri Risling 1-306-843-7109

**Corn, Soy Beans,  
Alfalfa & Canola Seed**





# TERMS AND CONDITIONS

## TERMS

The terms of the sale are cash or cheque payable at par at Kramer's Big Bid Barn unless satisfactory credit arrangements have been made previous to the sale. The right of property shall not pass until after settlement is made. Kramer Auctions Ltd. reserves the right to require a certified cheque as settlement before releasing any sale cattle. Should any purchaser fail to settle for his purchase Kramer Auctions Ltd. reserves full power to resell the animal to the best advantage either publicly or privately, without further notice. Any loss arising from such resale together with keep and all other expenses shall be payable by the defaulter. All settlements must be made with the clerks of the sale before any cattle will be released.

## BID

Every animal consigned to the sale must be sold by auction. No private sales will be allowed except as otherwise provided for in the terms and conditions. No by-bidding will be permitted. Each animal will be sold to the highest bidder.

## DISPUTES

In cases of disputes, bidding will be reopened between the parties involved. If no further bid is made the buyer will be the person from whom the auctioneer accepted the last bid. The auctioneer's decision in such matters will be final.

## PURCHASER'S RISK

Each animal becomes the risk of the purchaser as soon as sold. Animals will be cared for at the purchaser's risk for a reasonable length of time.

## ANNOUNCEMENTS

from the auction block will take precedence over the printed matter in this catalogue. Buyers are therefore cautioned to pay attention to any such announcements.

## CERTIFICATE OF REGISTRY

A registration/recordation certificate issued and duly transferred will be furnished to the buyer of each animal after settlement has been made. It is the responsibility of the buyer to determine the acceptance of this certificate.

## SHIPPING

Assistance will be given in making shipment after the sale but no risk is assumed by Kramer Auctions Ltd. or Seller. Expenses incurred are the responsibility of the purchaser. Purchasers are requested to furnish shipping instructions when making settlement.

## BREEDERS GUARANTEE

As per Breed guidelines. Copies are available at the sale settlement desk to be picked up by the buyer at any time.

## HEALTH

It is the buyer's responsibility to determine health requirements for importing any animal into his province or state. Kramer Auctions Ltd. assumes no responsibility for the health status of any animal in the sale.

## ACCIDENTS

Although every precaution will be taken to protect the safety and comfort of buyers, neither Kramer Auctions Ltd. or the auctioneer assumes any responsibility in this matter and disclaims any liability legal or otherwise in the event of accident or loss of property.

## RIGHTS AND OBLIGATIONS

The above terms and conditions of the sale shall constitute a contract between the buyer and the seller and be equally binding to both. Resale of animals following purchase in this sale shall constitute a separate transaction and the rights and obligations of the two parties connected thereto are not covered by the terms and conditions of this sale.

## KRAMER AUCTIONS A RITCHIE BROS.™ SOLUTION IS AGENT ONLY

It is to be clearly understood that Kramer Auctions Ltd. is only acting as a medium between buyer and seller and is not in any way responsible for any failure on the part of either party to live up to his obligations, neither does Kramer Auctions A Ritchie Bros.™ solution assume any financial obligations to collect or enforce collection of any monies between parties, and any legal action that may, in exceptional cases, be taken, must be between buyer and seller.

The Auctioneer shall have the right to refuse bids from anyone who has a previous record of default in payment or who has not made proper credit clearance prior to the sale with the owner or Sale Managers.

**GREAT PRINTING!  
GREAT SERVICE!  
and that's**

**NO  
BULL!**



1981 - 100th Street North Battleford, SK  
Phone (306) 445-5050 • Fax (306) 445-8771  
Toll Free 1-888-25PRINT  
E-mail: info@ultraprint.ca • Website: www.ultraprint.ca



# CORN HYBRIDS

Introducing **NEW Pioneer®** brand corn seed products with industry-leading yield potential and maturities developed for Western Canada. Put the superior genetic potential of Pioneer® brand corn hybrids to work for you. Ask us for a seed recommendation for your fields.

## GRAZING CORN

Corn offers a high quality and high quantity feed choice that will outperform other feed options available to producers, for winter grazing beef cattle.

In grazing situations, corn will help lower your cost of production, increase your cow-days per acre, and maintain cow health and condition throughout the winter grazing season.

Some things to consider when planning for winter grazing your corn crop:

### Corn Hybrid Choice & Management for Grazing

- Grazing corn should be at 30-50% milk line at first killing frost
- Choose a hybrid that is 150-300 CHU later than your corn heat unit area to reduce risk of acidosis and increase palatability
- Plant multiple hybrids to cover off an earlier or later season – 2-3 hybrids spread over 100-200 CHU differences

### How many acres do I need to graze my cows?

- **Expect between 150 – 300 cow-days per acre**  
 e.g. 200 cows grazing for 30 days will need:  
 30 days X 200 cows = 6000 cow grazing days required.  
 Based on 200 cow-days per acre,  
 you would require: 6000 cow grazing days ÷ 200 cow-days per acre = 30 acres of corn

## SILAGE CORN

Our corn silage products provide excellent early starch production for high energy feed and an early silage harvest. They also feature excellent stay green characteristics for green harvest and high tonnage.

### Key Benefits of Planting Corn for Silage

- Corn has lower starch digestion rates per hour in rumen than barley, which means possibly lower incidence of acidosis, and better balance between rumen fermentation and intestinal digestion
- When considering the best silage option for your operation, look first at the importance of starch in the animal diet.
- Corn produces almost 2X the tons of wet silage harvested per acre than barley
- Corn also has better water use efficiency compared to wheat, barley or oats (Teutsch, 2013)

### Things to Keep in Mind About Corn Silage

- When considering the best silage option for your operation, remember the importance of starch as an energy source in the diet
- At silage maturity, the corn plant is still producing starch - the longer it stays in the field, the more starch is produced
- To ensure silage success adhere to proper silage whole plant moisture when determining harvest timing
- When comparing costs of barley silage versus corn silage, use a per ton basis - while per acre costs are higher for corn silage, production costs on a per ton basis favour corn silage

**NACHTEGAELE  
AGRI SERVICES**  
 FARMERS SERVING FARMERS  
**306-445-3347**

**The majority of the feed value of corn comes from the cob. Pioneer® corn hi-breds deliver the best combination of maturity and cob yield in Western Canada. Big mature corn cobs will deliver big mature bulls.**

To check out yield results in your area go to [www.pioneer.com/yield](http://www.pioneer.com/yield)



# PROVEN BY EXPERTS

## And by experts we mean livestock

For forage producers, Proven® Seed is the ideal blend of genetics, quality, advice and value.

Get today's most consistent, top-quality forage seed products — backed by agronomic expertise and, 25 years of industry-leading research. Our Proven Master Blends feature performance and value, custom-designed for the Prairies.

It's balancing your land with your agronomic and feed requirements, resulting in a recommendation you and your livestock will like.

**Now that's what we call proven.**

**Proven**  
SEED

Crop  
Production  
Services 




**RETURN TO:**

Donnie Swistun

RR 1

North Battleford, SK

S9A 2X3



Grass changes with the season.  
Shouldn't your mineral?

---

## **Right Now<sup>®</sup> Mineral**

---

**Emerald** | **Bronze** | **Gold** | **Onyx**

For more information on our  
Right Now Mineral line call

**Doug Allison**

**204.724.2652**

[www.cargill.com/feed](http://www.cargill.com/feed)

©2018 Cargill, Limited. All Rights Reserved.



**Cargill<sup>®</sup>**